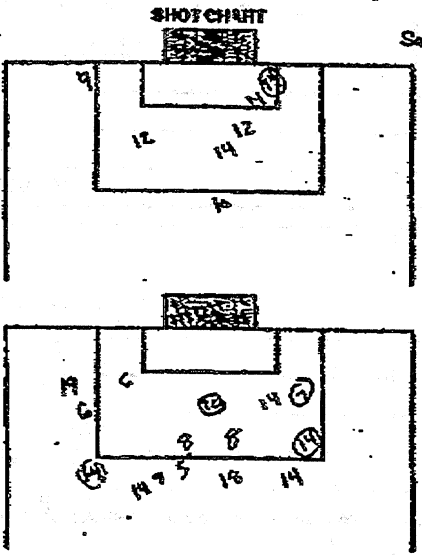


OFFICIAL NCAA SOCCER BOX SCORE FORM

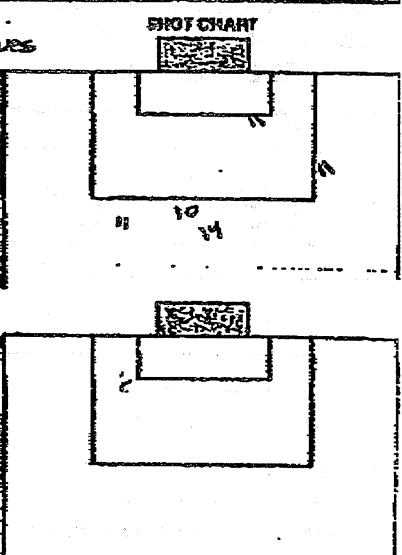
P. 01

VISITOR APU		HOME SCC	
DATE 9-30-97	OFFICIALS 1		
WEATHER 85°+		ATTENDANCE	

VISITOR	1	2	OT	OT	F
APU	1	3			4
HOME	6	6			6
SCC					



VISITOR				HOME			
SAVES	SHOTS	GOALS	ASSIST	NO.	NAME	POS.	NAME
				1	Jim Gorman	GK	Matt Riser
				3	Garrett Torres	DEF	Will Macielas
				4	Tess Hathavington	DEF	Mike Murphy
2				9	Aaron Sieker	DEF	Steve Butler
				10	Saul Barriontos	DEF	Mateo Clements
				12	Carlos Quiroz	MF	Test de Leish
				13	Matt Johnson	MF	Grant Stafford
7	2			14	Jason Roubis	MF	Chay McCombes
				16	David Hofmann	MF	Mateo Scroggs
				17	Tim Nordberg	F	Dave Ruzick
				20	P.J. Brown	F	Martin Lippens



SUBSTITUTIONS							
MIN	OUT	IN	NAME	POS.	NAME	POS.	MIN
		7	Will Cummins		Mike Deason		14
		7	Loiz Smith		Mateo Palmer		8
		11	Ricky Melendez		Ernest Gonzalez		19
		2	Kevin Toth				
1		19	David Chacko				
2		8	Kevin Horas				
		19	Kozak DeYoung				

SHOTS ON GOAL	
0 1 2 3 4 5 6 7 8 9 10	11 12 13 14 15 16 17 18 19 20
21 22 23 24 25 26 27 28 29 30	31 32 33 34 35 36 37 38 39 40
CORNER KICKS	
0 1 2 3 4 5 6 7 8 9 10	11 12 13 14 15 16 17 18 19 20
GOALIE SAVES	
0 1 2 3 4 5 6 7 8 9 10	11 12 13 14 15 16 17 18 19 20
FOULS	
0 1 2 3 4 5 6 7 8 9 10	11 12 13 14 15 16 17 18 19 20
21 22 23 24 25 26 27 28 29 30	

GOALBY	TEAM	TIME*	ASST(S)	DESCRIPTION
14	Jason Roubis	APU	1:30	
7	Eric Smith	APU	25:00	own goal
14	Jason Roubis	APU	18:00	
20	P.J. Brown	APU	12:00	

SHOTS ON GOAL	
0 1 2 3 4 5 6 7 8 9 10	11 12 13 14 15 16 17 18 19 20
21 22 23 24 25 26 27 28 29 30	31 32 33 34 35 36 37 38 39 40
CORNER KICKS	
0 1 2 3 4 5 6 7 8 9 10	11 12 13 14 15 16 17 18 19 20
GOALIE SAVES	
0 1 2 3 4 5 6 7 8 9 10	11 12 13 14 15 16 17 18 19 20
FOULS	
0 1 2 3 4 5 6 7 8 9 10	11 12 13 14 15 16 17 18 19 20
21 22 23 24 25 26 27 28 29 30	

CAUTIONS & EJECTIONS: 'Y' 21:00 (2) SCC, 'Y' (6) APU 2:52, 'Y' 41:00 (3) SCC, 'Y' 54:10 (1) SCC, 'Y' 54:41 (2) SCC.

*NOTE: Times indicated should be total minutes and seconds into match.

SCC PLAYER OF GAME =

OPPONENT =

SEP-30-97 TUE 17:11